

**The Leader in  
Eddy Current Testing  
Performance**

# **JENTEK® GridStation® 8200 Series**

**GridStation Software**  
with HyperLattice®  
Multivariate Inverse Methods

**GridStation IN8200**

19 Channel Instrument

39 Channel Instrument



*GridStation Software is compatible  
with any Windows OS  
\*Laptop varies depending on availability*

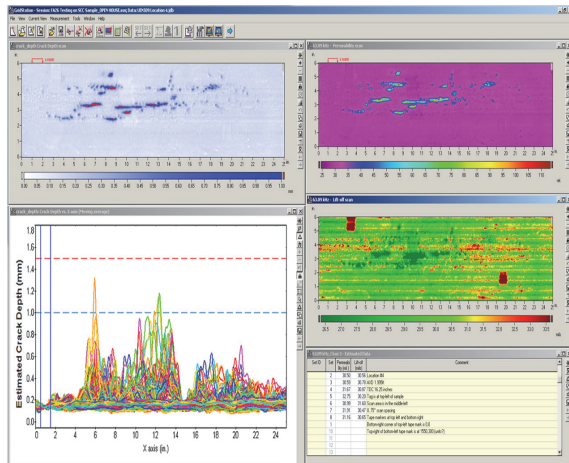
**Customized NDT Carts and  
Customized SHM Sensor Installation**

**With MWM®-Array Sensors**

**JENTEK® Sensors**

## NDT, SHM - Oil, Gas & Petrochemical Industry

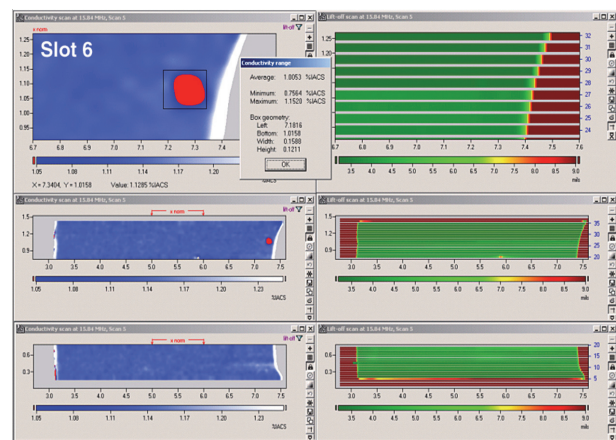
- Stress Corrosion Cracking (SCC) Mapping and Depth Measurement
- Pipeline ILI (Corrosion, Cracks, Stress)
- Pipeline SHM: Accelerated Damage Test Monitoring
- Stress Monitoring
- Crack Monitoring
- Corrosion Monitoring



GridStation SCC Image

## NDT, SHM - Aerospace & Defense Industry

- NDT for Engines (Turbine Blade & Disk Inspection)
- NDT for Structures (Bolt Holes, Landing Gear, Lap Joints, Composites)
- Corrosion Imaging for Multi-Layered Aircraft Structures
- SHM for Damage (Laboratory Fatigue Test Monitoring)



GridStation Engine Disk Slot Crack Detection Image

## JENTEK 8200 Specifications

General	
Overall dimensions (W x H x D)	11" x 8.1" x 2.75" 279.4 mm x 205.7 mm x 69.8 mm
Weight	5 lbs. (2.27 kg) for 19 Channels 6 lbs. (2.72 kg) for 39 Channels
Connection Ports	
Encoder Ports	2
Trigger Ports	2
Probe Ports	1 per 20 Channels
Ethernet	100/10 MB/s
Connects with JENTEK MWM and MWM-Array Sensors	

Hardware Specifications	
Instrument power	10-36V DC* *External power adapter provided (runs off of 100-240V, 50-60 Hz AC)
Number of channels	Configurable 19-119
Operating frequency	2.5Hz - 21MHz (Inductive) 2.5Hz - 320Hz (MR Sensing)
Data Processing	
Requires GridStation and Windows OS Software with a compatible desktop or laptop configuration	
Other	
Shoulder strap, protective carry case available	

# JENTEK® Sensors, Inc.

110-1 Clematis Avenue, Waltham, MA 02453-7013 USA  
Phone: 781-373-9700 • www.jentekensors.com

GridStation, MWM, and JENTEK Sensors are registered trademarks of JENTEK Sensors, Inc.  
Windows is a registered trademark of Microsoft Corporation in the United States and other countries.

JENTEK Issued patents include U.S. Patent #: 8,981,018, 8,960,012, 8,928,316, 8,803,515, 8,768,657, 8,494,810, 8,237,433, 8,222,897, 8,050,883, 7,994,781, 7,876,094, 7,812,601, 7,696,748, 7,589,526, 5,533,575, 7,528,598, 7,526,964, 7,518,360, 7,467,057, 7,451,657, 7,451,639, 7,411,390, 7,385,392, 7,348,771, 7,289,913, 7,280,940, 7,230,421, 7,188,532, 7,183,764, 7,161,351, 7,161,350, 7,106,055, 7,095,224, 7,049,811, 6,995,557, 6,992,482, 6,952,095, 6,798,198, 6,784,662, 6,781,387, 6,727,691, 6,657,429, 6,486,673, 6,433,542, 6,420,867, 6,380,747, 6,377,039, 6,351,120, 6,198,279, 6,188,218, 6,144,206, 5,966,011, 5,793,206, 5,629,621, 5,990,677 and RE39,206 (other patents pending).